

Del Webb Sunbridge

A photograph of a landscaped area featuring a large stone sign with the text "Del Webb sunbridge" in a stylized font. The sign is set against a backdrop of palm trees and a clear blue sky. In the foreground, there are several cascading waterfalls over stone walls, creating a serene and modern atmosphere. The overall scene is well-maintained and aesthetically pleasing.

Landscape Town Hall, February 2025



Agenda

Welcome/Opening Remarks

2024 Initiatives – Update

General Landscape Updates

2025 Initiatives

All Documents will be posted to www.delwebbsunbridgehoa.com

Landscape Committee/Purpose

- The primary purpose of the Committee is to foster an effective working relationship between all residents of the Association, the Association's Board of Directors, and Property Management Company in dealing with landscaping matters that affect the community at large as well as the individual lots within the community.
- **The Committee is advisory only** and will serve as a focal point for gathering input from residents regarding community landscaping in cooperation with the Board and the landscaping vendor to help formulate solutions to meet emerging needs as the community evolves.



Lori Quinlivan—First Chair
Luis Rodriguez—Secretary
Kenneth Mickelsen—Second Chair

Alternate: Allen Eschette



Landscape Committee Updates

- 2024 Initiatives – Update
 - Quality Assurance (QA) tool
 - Operations Manual
 - Plant replacement/exchange
 - Door post-it notes
- General Landscape Updates
 - Sod replacement – complete
 - Mulch – Starts week of February 17
 - Exclusive staff changes

Exclusive Staff

- Detail Crew: 7 Onsite
- Install Crew: 3
- Irrigation Technician: 2
- Onsite Agronomy Technician: 1
- Mow Crew (Winter Months): 8
- Field Manager - Joshua Cortes
- Account Manager – Sydney Swartman
 - She only covers our community
- Agronomy: Tim Kramer
- GM: Luis Cortes





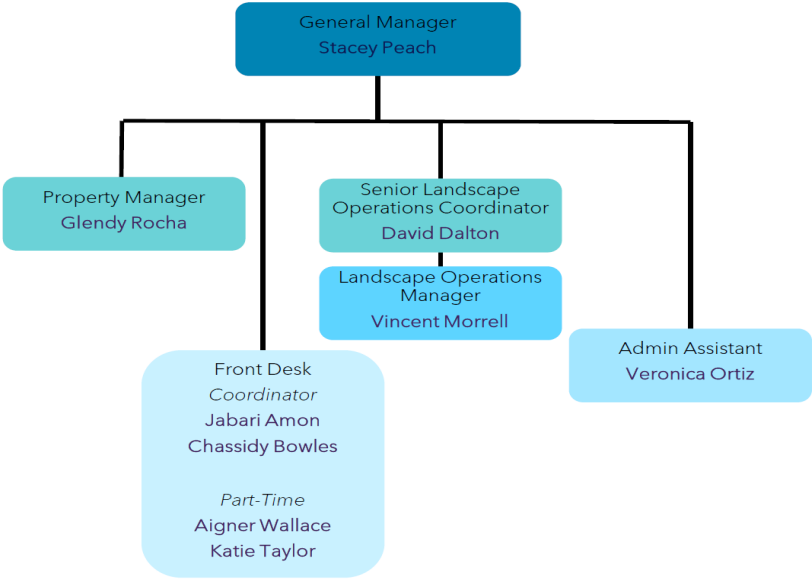
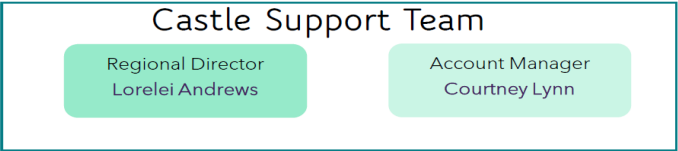
Del Webb Landscape Team

Del Webb[®]

SUNBRIDGE

Organization Chart

Landscape Team





Landscape Committee 2025 Initiatives

Planting initiatives

- Plant Replacement - Exchange same plant for plant, no ARC application required
 - Homeowner responsibility
- Landscape design changes or changes in plantings will require ARC application
- In addition to the approved vendors, Homeowners are allowed to perform work
 - Homeowners are required to comply with submitted plan/inspections

ARC Review Process

- Landscape committee will review landscape ARC applications to improve/reduce wait time
- Meeting weekly on Wednesdays at 3:30 pm with Landscape/Castle Team
 - If additional information is needed following the committee's review, the committee will contact the homeowner to schedule time for a site visit
- Helpful tips for completing ARC application
 - Rules and Regulations: Please refer to pages 18 - 23 in the Sunbridge Rules and Regulations
 - Architectural Guidelines
 - Community Information/Landscape: OPS Manual



Landscape Committee 2025 Initiatives

- Landscape Replacement Fund
 - Villas - \$7
 - 40's - \$8
 - 50's & 65's - \$10
- Monthly contributions placed into a separate fund
- Sod replaced by Developer for two or three years to grow this fund

- Landscape Operations Manual
 - Working document
 - Linked to weekly Landscape Update

Landscape Operations Manual

Please click [HERE](#) to view the guidelines.



Landscape Committee Email General Concerns

Thank you for your emails to the Landscape Committee email address

- **Please create a work order**
 - Updates come from delwebbsunbridge@gmail.com
- Email general concerns/comments
- If work is delayed or work order is closed without resolution

DelWebbLandscapeCommittee@gmail.com

Cut and Cap/Retro Fit



ARC Landscape Projects: Irrigation, Cut & Cap, Retro Fit

- Reminder when you have a lanai extension, pool installation, or driveway extension.
- Step 1- Call for a proposal to have the irrigation cut and capped before starting construction. The capping of the lines allows for digging of the project to begin without creating unnecessary water waste.
- Step 2- Call the landscape company for an estimate on retro fitting the irrigation to accommodate the new layout of the grass. The timing of the retro fit is very important to help get the system back up and running once the construction and retro fit is complete.
 - **Place a work order if Exclusive is doing the work**
- Step 3- Call HOA for the ARC inspection of work performed and get the ARC signed off.



Questions?